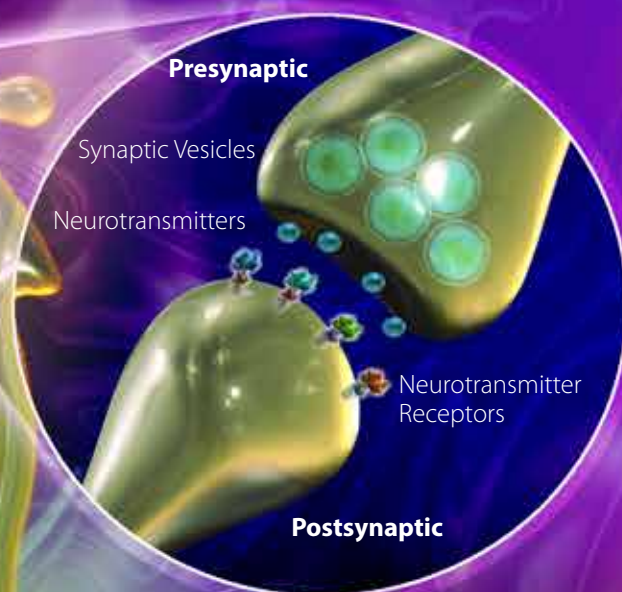


Neuronal Cell Markers

The highly compartmentalized structure of a neuron provides it with a unique shape, and allows for its distinction from other cell types in the nervous system. The compartments of these specialized cells can be generally classified into soma (cell body), axon, dendrite, axonal terminal, and synapse. BioLegend offers antibodies against markers that are specifically expressed in each structural unit of a neuron, and allow their identification using applications such as microscopy, including immunohistochemistry (IHC) or immunocytochemistry (ICC). Our portfolio also provides great coverage of conjugated primary antibody formats that are offered in multiple sizes. **Visit: biolegend.com/neuroscience**



- ### Presynaptic Markers
- Ankyrin-B**
N105/13
N105/17
 - Cask**
K56A/50
Doc2b
N150/21
 - GRK**
N145/20
 - Snap-25**
O91D3/SNAP-25
SMI 81
SP12
 - Stonin-2**
N346/9
 - SVOP**
N356/9
 - Synapsin**
A17080A
 - Synaptobrevin (VAMP)**
SP10
SP11
 - Synaptophysin**
SP17
 - Synaptotagmin-3**
N278/19
 - Synaptotagmin-6**
N270/47
 - Synaptotagmin-12**
N277/7
 - Syntaxin**
SP8
 - VGlut1**
N28/9
 - VGlut2**
N29/29
 - Wave1**
K91/36

- ### Postsynaptic Markers
- ADAM22**
N46/30
N57/2
 - ASIC1**
N271/44
 - IP3R1**
L24/18
 - Maguk**
K28/86
 - Neurogranin**
A16007A
NG2
NG7
 - PSD93**
N18/28
N18/30
 - PSD95**
K28/43
K28/74
 - SAP102**
N19/2
 - SAP97**
K64/15
 - SAPAP**
N127/31
N238/31
 - Shank**
K28/86
 - SyndIG1**
L42/17
 - Thorase**
N125/10

- ### Neurotransmitter Receptors
- Dopamine Receptors**
N331/19
L205G1
2B9/DRD4
 - GABA Receptors**
N87/25
N81/2
N95/35
 - GluA Receptors**
Poly28025
L21/32
N355/1
 - GluN Receptors**
N308/48
N59/36
R1JHL
N327/95
N59/20
 - nAch Receptors**
210
299
306
319
61
66

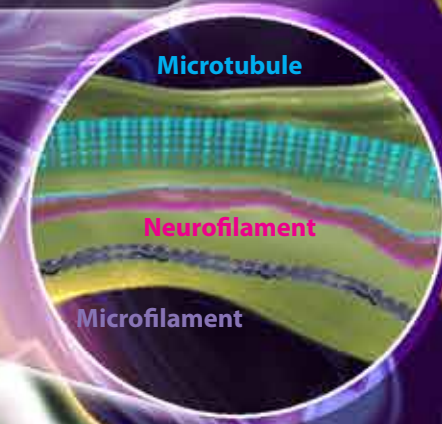
- ### Nuclear Markers
- | | | |
|----------------------------|---------------------------|-------------------------|
| c-Fos
Poly6414 | HDAC2
13G8C67 | NeuN
1B7 |
| FUS
10F7 | HDAC3
3F3/HDAC2 | MECP2
N227/21 |
| HDAC1
10E2/HDAC1 | HDAC8
3G6 | PCNA
2/40/15 |
| STAT3
1A6C37 | HDAC8
W15097A | STAT3
4G4B45 |
| HDAC8
Poly6074 | | |

- ### Axon Markers
- | | | |
|--|--|--|
| Neurofilament L
NFL2
NFL3 | Neurofilament H
Poly28226
Poly28408 (P) | Pan-Neurofilament
SMI 311 (Pan-Neuronal)
SMI 312 (Pan-Axonal) |
| Neurofilament M
Poly28227
Poly28410 | Neurofilament M/H
SMI 37
SMI 39
SMI 38 | Tau
Tau 12
SMI 51
Tau 5
Tau 13
Tau 2
2G9.F10 |
| | RMdO-20
SMI 35 (HP)
SMI 310 (P)
SMI 33 (NP) | |

- ### Soma Markers
- NSE**
NSE-P1
NSE-P2
 - Tyrosine Hydroxylase**
2/40/15

- ### Axon, Dendrite, and Soma Markers
- | | |
|--|--|
| α-Tubulin
10D8
AA13
TU-01 | β3-Tubulin
TUJ1
Poly18020
SMI 61
SMI 62 |
| β-Actin
2F1-1
Poly6221
W16197A | AA10 |

- ### Dendrite Markers
- MAP2**
AA6
Poly18406
Poly28225
SMI 52



- ### Myelin Sheath Markers
- Myelin Basic Protein**
P82H9
SMI 99
SMI94
 - Myelin CNPase**
SMI 91

