

Purified anti-mouse IgDa

Catalog # / Size: 406108 / 500 µg

Clone: AMS-9.1

Isotype: Mouse (SJL) IgG2b, κ

Reactivity: Mouse

Preparation: The antibody was purified by affinity chromatography.

Formulation: Phosphate-buffered solution, pH 7.2, containing 0.09% sodium azide.

Concentration: 0.5 mg/ml

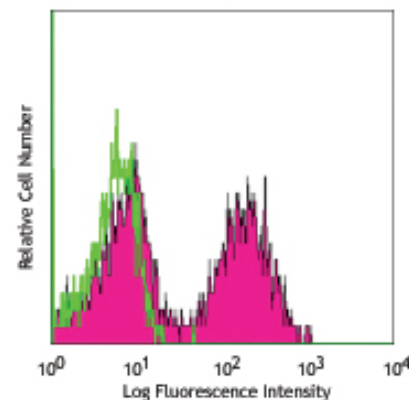
Storage: The antibody solution should be stored undiluted between 2°C and 8°C.

Applications:

Applications: FC - *Quality tested*

Recommended Usage: Each lot of this antibody is quality control tested by immunofluorescent staining with flow cytometric analysis. For flow cytometric staining, the suggested use of this reagent is ≤ 0.25 µg per 10^6 cells in 100 µl volume. It is recommended that the reagent be titrated for optimal performance for each application.

Application References: 1. Stall AM, *et al.* 1984. *J. Immunol.* 132:787.
2. Goroff DK, *et al.* 1986. *J. Immunol.* 136:2382.



BALB/c splenocytes stained with purified AMS-9.1, followed by anti-mouse IgG2b FITC

Description: This antibody was raised by immunization with BALB/c mouse splenocytes. It specifically reacts with mouse IgD of *Igh-C^a* haplotype, but does not react with b and c haplotypes. This antibody is able to induce B cell activation and proliferation.

Related Products:	Product	Clone	Application
	Purified Mouse IgG2b, κ Isotype Ctrl	MG2b-57	FC, ICC, ICFC, IF, IHC, IP, WB
	Cell Staining Buffer		FC, ICC, ICFC
	RBC Lysis Buffer (10X)		FC, ICFC



For research use only. Not for diagnostic use. Not for resale. BioLegend will not be held responsible for patent infringement or other violations that may occur with the use of our products.



*These products may be covered by one or more Limited Use Label Licenses (see the BioLegend Catalog or our website, www.biolegend.com/ordering#license). BioLegend products may not be transferred to third parties, resold, modified for resale, or used to manufacture commercial products, reverse engineer functionally similar materials, or to provide a service to third parties without written approval of BioLegend. By use of these products you accept the terms and conditions of all applicable Limited Use Label Licenses. Unless otherwise indicated, these products are for research use only and are not intended for human or animal diagnostic, therapeutic or commercial use.