

## Purified anti-Survivin

**Catalog # / Size:** 614701 / 50  $\mu$ l (5 Western blots)  
614702 / 200  $\mu$ l (20 Western blots)

**Clone:** Poly6147

**Isotype:** Rabbit IgG

**Immunogen:** Recombinant (partial), C-terminal

**Reactivity:** Human

**Preparation:** The antibody was purified by antigen-affinity chromatography.

**Formulation:** This antibody is provided in phosphate-buffered solution, pH 7.2, containing 0.09% sodium azide and 50% glycerol.

**Storage:** Upon receipt, store frozen at -20° C.

## Applications:

**Applications:** WB

**Recommended Usage:** Each lot of this antibody is quality control tested by Western blotting. Western blotting, suggested working dilution(s): Use 10  $\mu$ l per 5 ml antibody dilution buffer for each mini-gel. It is recommended that the reagent be titrated for optimal performance for each application.

**Application Notes:** This antibody is not suitable for immunoprecipitation.

**Description:** Survivin (also known as baculoviral IAP repeat-containing protein (BIRC5)) is a member of the IAP family containing a BIR domain. This protein has two reported isoforms  $\alpha$  and  $\beta$ , with reported molecular weights of approximately 16.5 kD and 18.6 kD, respectively. Survivin can form dimers and is distributed at the microtubules of the mitotic spindle. Survivin plays a possible role in neoplasia and is expressed in embryonic tissues and the majority of human cancers, but not in most normal adult tissues. Survivin may counteract default induction of apoptosis in G2/M phase, and inhibits caspase-3 and caspase-7 activation. Survivin is downregulated by p53 and stabilized by phosphorylation. Survivin is phosphorylated by cdc2. Survivin has been shown to interact with tubulin and HBXIP. The Poly6147 antibody recognizes the C-terminal region of human survivin and has been shown to be useful for Western blotting.

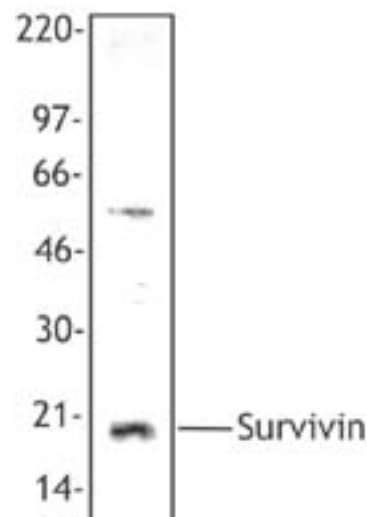
**Antigen References:**

1. Li, F., *et al.*, 1998. *Nature*. 396:580.
2. Chantalat, L., *et al.*, 2000. *Mol. Cell*. 6:183.
3. Wall, N., *et al.*, 2003. *Cancer Res*. 63:230.
4. Lens, S., *et al.*, 2003. *EMBO J*. 22:2934.

**Related Products:**

Product	Clone	Application
Purified anti-Caspase-3	4-1-18	WB
Purified anti-Caspase-7	Mono6218	WB
HRP Donkey anti-rabbit IgG (minimal x-reactivity)	Poly4064	ELISA,IHC,WB

Product	Clone	Application
Purified anti-Caspase-3	4-1-18	WB
Purified anti-Caspase-7	Mono6218	WB
HRP Donkey anti-rabbit IgG (minimal x-reactivity)	Poly4064	ELISA,IHC,WB



*Hela cell extract was resolved by electrophoresis, transferred to nitrocellulose, and probed with rabbit anti-survivin antibody. Proteins were visualized using a donkey anti-rabbit secondary conjugated to HRP and a chemiluminescence detection system.*



For research use only. Not for diagnostic use. Not for resale. BioLegend will not be held responsible for patent infringement or other violations that may occur with the use of our products.

