

## GMP Pacific Blue<sup>™</sup> anti-human CD4 Antibody

<b>Catalog# / Size</b>	260068 / 100 tests
<b>Clone</b>	SK3
<b>Other Names</b>	T4, Leu3a
<b>Isotype</b>	Mouse IgG1, κ
<b>Description</b>	CD4, also known as T4, is a 55 kD single-chain type I transmembrane glycoprotein expressed on most thymocytes, a subset of T cells, and monocytes/macrophages. CD4, a member of the Ig superfamily, recognizes antigens associated with MHC class II molecules and participates in cell-cell interactions, thymic differentiation, and signal transduction. CD4 acts as a primary receptor for HIV, binding to HIV gp120. CD4 has also been shown to interact with IL-16.

### Product Details

---

<b>Reactivity</b>	Human
<b>Antibody Type</b>	Monoclonal
<b>Host Species</b>	Mouse
<b>Formulation</b>	Phosphate-buffered solution, pH 7.2, containing 0.09% sodium azide and 0.2% (w/v) BSA (origin USA).
<b>Preparation</b>	The antibody was purified by affinity chromatography and conjugated with Pacific Blue <sup>™</sup> under optimal conditions.
<b>Concentration</b>	50 µg/mL
<b>Storage &amp; Handling</b>	The antibody solution should be stored undiluted between 2°C and 8°C, and protected from prolonged exposure to light. <b>Do not freeze.</b>
<b>Application</b>	<a href="#">FC - Quality tested</a>
<b>Recommended Usage</b>	<p>Each lot of this antibody is quality control tested by <a href="#">immunofluorescent staining with flow cytometric analysis</a>. For flow cytometric staining, the suggested use of this reagent is 5 µL per million cells in 100 µL staining volume or 5 µL per 100 µL of whole blood. It is recommended that the reagent be titrated for optimal performance for each application.</p> <p>* Pacific Blue<sup>™</sup> has a maximum emission of 455 nm when it is excited at 405 nm. Prior to using Pacific Blue<sup>™</sup> conjugate for flow cytometric analysis, please verify your flow cytometer's capability of exciting and detecting the fluorochrome.</p>
<b>Excitation Laser</b>	Violet Laser (405 nm)
<b>Application References</b>	<ol style="list-style-type: none"> <li>1. Evans RL, <i>et al.</i> 1981. <i>Immunol.</i> 78:544</li> <li>2. Arno A <i>et al.</i> 1999. <i>J. Infect. Dis.</i> 180:56</li> <li>3. Muech M, <i>et al.</i> 1997. <i>Blood</i> 89:1364</li> <li>4. Wang L, <i>et al.</i> 2012. <i>Cytometry A.</i> 81:567. <a href="#">PubMed</a></li> </ol>
<b>(PubMed link indicates BioLegend citation)</b>	
<b>Disclaimer</b>	<p><b>GMP RUO Flow Cytometry Antibodies.</b> BioLegend GMP RUO fluorophore conjugated antibodies are manufactured in a dedicated GMP facility and compliant with ISO 13485:2016. For research use only. Not for use in diagnostic or therapeutic procedures. Our processes include:</p> <ul style="list-style-type: none"> <li>• Batch-to-batch consistency</li> <li>• Material traceability</li> <li>• Documented procedures</li> <li>• Documented employee training</li> <li>• Equipment maintenance and monitoring records</li> <li>• Lot-specific certificates of analysis</li> <li>• Quality audits per ISO 13485:2016</li> </ul>

- QA review of released products

## Antigen Details

---

<b>Structure</b>	Ig superfamily, type I transmembrane glycoprotein, 55 kD
<b>Distribution</b>	T cell subset, majority of thymocytes, monocytes/macrophages
<b>Function</b>	MHC class II co-receptor, lymphocyte adhesion, thymic differentiation, HIV receptor
<b>Ligand/Receptor</b>	MHC class II molecules, HIV gp120, IL-16
<b>Cell Type</b>	Macrophages, Monocytes, T cells, Thymocytes, Tregs
<b>Biology Area</b>	Immunology
<b>Molecular Family</b>	CD Molecules
<b>Antigen References</b>	<ol style="list-style-type: none"> <li>1. Center D, <i>et al.</i> 1996. <i>Immunol Today</i>. 17:476-81.</li> <li>2. Gaubin M, <i>et al.</i> 1996. <i>Eur J Clin Chem Clin Biochem</i> 34:723-8.</li> </ol>
<b>Gene ID</b>	<a href="#">920</a>

## Related Protocols

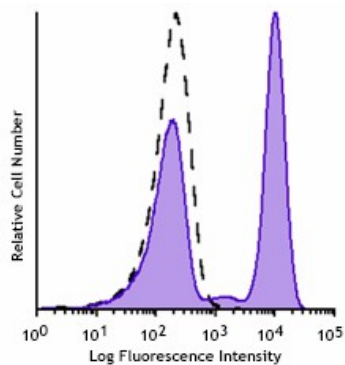
---

[Cell Surface Flow Cytometry Staining Protocol](#)

## Other Formats

---

PerCP anti-human CD4, Purified anti-human CD4, FITC anti-human CD4, PE anti-human CD4, PerCP/Cyanine5.5 anti-human CD4, Biotin anti-human CD4, PE/Cyanine7 anti-human CD4, APC anti-human CD4, APC/Cyanine7 anti-human CD4, Alexa Fluor® 488 anti-human CD4, Pacific Blue™ anti-human CD4, Alexa Fluor® 700 anti-human CD4, Purified anti-human CD4 (Maxpar® Ready), Brilliant Violet 421™ anti-human CD4, Brilliant Violet 510™ anti-human CD4, Alexa Fluor® 647 anti-human CD4, APC/Fire™ 750 anti-human CD4, PE/Dazzle™ 594 anti-human CD4, Brilliant Violet 785™ anti-human CD4, Brilliant Violet 750™ anti-human CD4, Brilliant Violet 605™ anti-human CD4, Brilliant Violet 711™ anti-human CD4, TotalSeq™-A0045 anti-human CD4, TotalSeq™-C0045 anti-human CD4, PE/Cyanine5 anti-human CD4, Spark Blue™ 550 anti-human CD4, Spark NIR™ 685 anti-human CD4, KIRAVIA Blue 520™ anti-human CD4, APC/Fire™ 810 anti-human CD4, PE/Fire™ 640 anti-human CD4, PE/Fire™ 700 anti-human CD4, Spark Violet™ 538 anti-human CD4 Antibody, Spark YG™ 581 anti-human CD4, Alexa Fluor® 660 anti-human CD4, Spark YG™ 593 anti-human CD4, PE/Fire™ 810 anti-human CD4 Antibody, APC/Fire™ 750 anti-human CD4, Spark Blue™ 574 anti-human CD4, GMP APC anti-human CD4, TotalSeq™-B0045 anti-human CD4 Antibody, Spark Violet™ 423 anti-human CD4 Antibody



Typical results from human peripheral blood lymphocytes stained either with clone SK3 Pacific Blue™ used at 5 µL/test (filled histogram) or with an isotype control (dashed histogram).

Symbols Glossary\*

Symbol	Meaning	Symbol Title	Symbol No.	Symbol	Meaning	Symbol Title	Symbol No.
	Catalog number	Catalogue number	5.1.6		Indicates the need for the user to consult the instructions for use.	Consult instructions for use	5.4.3
	Indicates the temperature limits to which the medical device can be safely exposed.	Temperature limit	5.3.7		Indicates a medical device that needs protection from light sources.	Keep away from sunlight	5.3.2
	Indicates the upper limit of temperature to which the medical device can be safely exposed.	Upper limit of temperature	5.3.6		Indicates the date after which the medical device is not to be used.	Use-by date	5.1.4
	Indicates the medical device manufacturer.	Manufacturer	5.1.1		Indicates the authorized representative in the European Community.	Authorized representative in the European Community	5.1.2
	Indicates the manufacturer's batch code so that the batch or lot can be identified.	Batch code	5.1.5		Indicates a medical device that is intended to be used as an in vitro diagnostic medical device.	<i>In vitro</i> diagnostic medical device	5.5.1

\* Symbol information is from EN ISO 15223-1:2016 Medical devices – Symbols to be used with medical device labels, labelling and information to be supplied – Part 1: General requirements

For research use only. Not for resale. BioLegend will not be held responsible for patent infringement or other violations that may occur with the use of our products.

\*These products may be covered by one or more Limited Use Label Licenses (see the BioLegend Catalog or our website, [www.biolegend.com/ordering#license](http://www.biolegend.com/ordering#license)). BioLegend products may not be transferred to third parties, resold, modified for resale, or used to manufacture commercial products, reverse engineer functionally similar materials, or to provide a service to third parties without written approval of BioLegend. By use of these products you accept the terms and conditions of all applicable Limited Use Label Licenses.

BioLegend Inc., 8999 BioLegend Way, San Diego, CA 92121 [www.biolegend.com](http://www.biolegend.com)  
 Toll-Free Phone: 1-877-Bio-Legend (246-5343) Phone: (858) 768-5800 Fax: (877) 455-9587